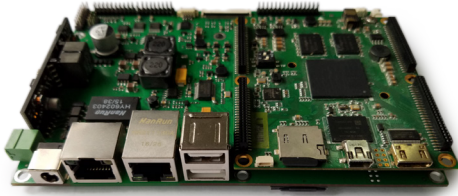


NXP i.MX6 ARM Cortex A9 3.5" Embedded Board with Dual Gigabit Ethernet, POE, RS-232/485, and CAN Bus



INTRODUCTION

The EMB-3200 is a 3.5" industrial motherboard based on NXP i.MX6 ARM applicatoion Processor. The board features dual Intel Gigabit Ethernet ports, Power over Ethernet (PoE), on-board WiFi/ BT module, multiple LCD panel support, and full set of I/Os including RS-232/485, CAN, digital IO and more.

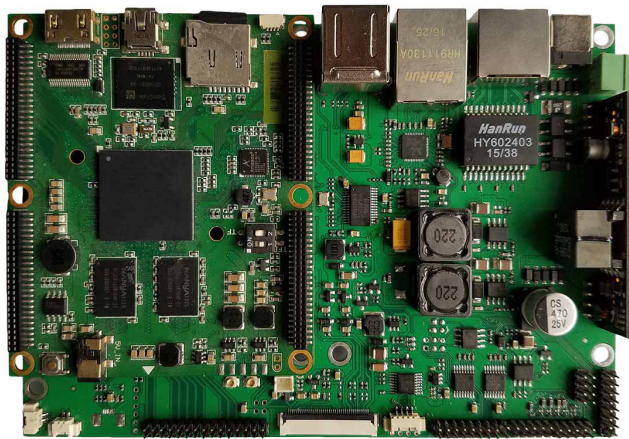
FEATURES

- NXP i.MX6 1 GHz Dual-Lite or Quad Core
- Two Gigabit Ethernet ports, one WiFi/Bluetooth module
- Build-in POE (Power over Ethernet) option
- On-board RAM, iNAND flash and micro SD slot
- HDMI + LVDS for LCD panel support, built-in touch controller
- On-board mini PCIe with SIM card connector
- Rich I/O with CAN, RS-232/485, I2C, SPI, and four USB ports

SPECIFICATIONS

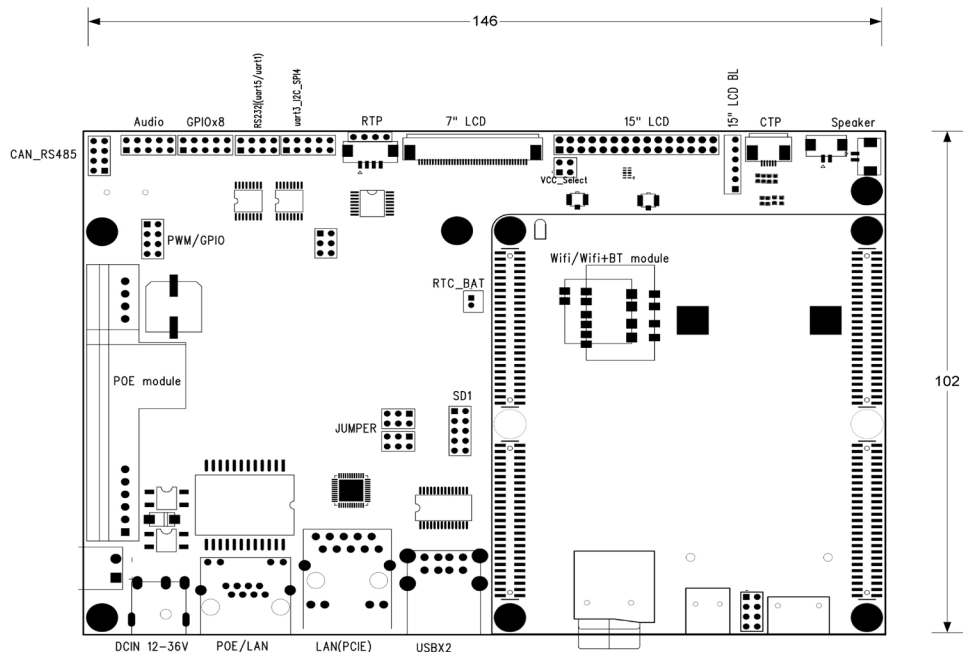
Model	EMB-3200
Platform	ARM Cortex A9
Processor	NXP i.MX 6 Dual Lite or Quad-core @1GHz
System Memory	Onboard 1GB DDR3
Ethernet	2 x 10/100/1000 Mbps GbE, one with POE option
Storage	Onboard iNAND flash (8GB default), 1x micro SD slot
Wireless	1x WiFi/Bluetooth via USB module
Display Interface	1x mini HDMI, 1x LVDS for 7" LCD panel, 1x 24bit standard LVDS for other panel size.optional
LCD Interface	1x LVDS for 7" LCD panel, 1x 24bit standard LVDS for other panel size.optional
Display Resolution	HDMI - 1920 x 1080, LVDS - 1920 x 1080
Expansion	1x full size mini-PCIe x1 slot for USB with SIM socket
I/O	3x RS-232, 1x RS-485 header 1x CAN header 2x USB2.0, 2x USB2.0 header 4+ GPIO, 1x SPI, 1x I2C (four TP), 1x 4-wire TP controller, 1x CAN
Audio	Line-out, MIC-in, headphone, spaker out header (1W)
Watchdog timer	Programmable timer system reset
Cooling	Fanless
Power Input	12V-36V DC 2.5mm power jack or POE
Form Factor	Embedded 3.5" standard
Operating Temperature	-20 ~ 70°C (-4 ~ 158°F)
Storage Temperature	-40 ~ 85° C (-40 ~ 185° F)
Operating Humidity	5% ~ 95% @ 40°C (Non-Condensing)
Dimensions	146 x 102 mm (5.75" x 4.02")

LAYOUT



DIMENSIONS

Unit: mm



ORDER INFORMATION

Part No.	Description
EMB-3200SDL	NXP i.MX6 Dual-lite with single NIC, no POE
EMB-3200SQ	NXP i.MX6 Quad-Core with single NIC, no POE
EMB-3200DL	NXP i.MX6 Dual-lite with dual NIC, no POE
EMB-3200Q	NXP i.MX6 Quad-Core with dual NIC, no POE
HB-AG9412	12V POE add-on module