

## EMB-3200 Quick Setup Guide

### 1. Package includes:

- 1 x EMB-3200 Board
- 1 x 12V Power Adapter

### Safety Warning

The use and installation of this system should only be performed by professionals. Improper installation of any electronic device or electrical component can result in serious injury or death. Please make sure that all safety precautions are taken into account.

### Static-Sensitive Devices

Electrostatic-Discharge (ESD) can damage electronic components. To avoid damaging your system board, it is important to handle it very carefully. The following measures are generally sufficient to protect your equipment from ESD.

### Precautions

- Use a grounded wrist strap designed to prevent static discharge.
- Touch a grounded metal object before removing the board from the antistatic bag.
- Handle the board by its edges only; do not touch its components, peripheral chips, memory modules or gold contacts.
- When handling chips or modules, avoid touching their pins. Put the motherboard and peripherals back into their antistatic bags when not in use.

### 2. Layout

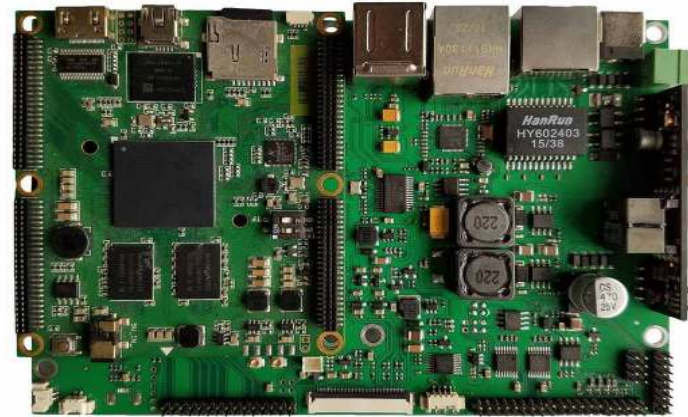


Figure 1: Top view

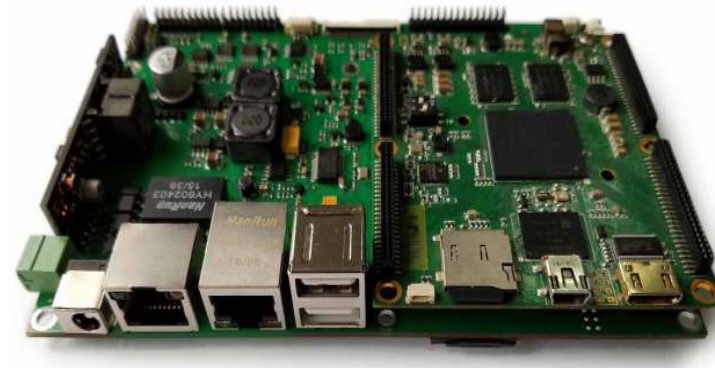


Figure 2: Front view

### 3. Get started

#### 3.1. Connect to a network (Optional)

While the unit boots up, it discovers an IP address from DHCP server. To reduce booting up time, a valid network cable serving for DHCP request should be plugged.

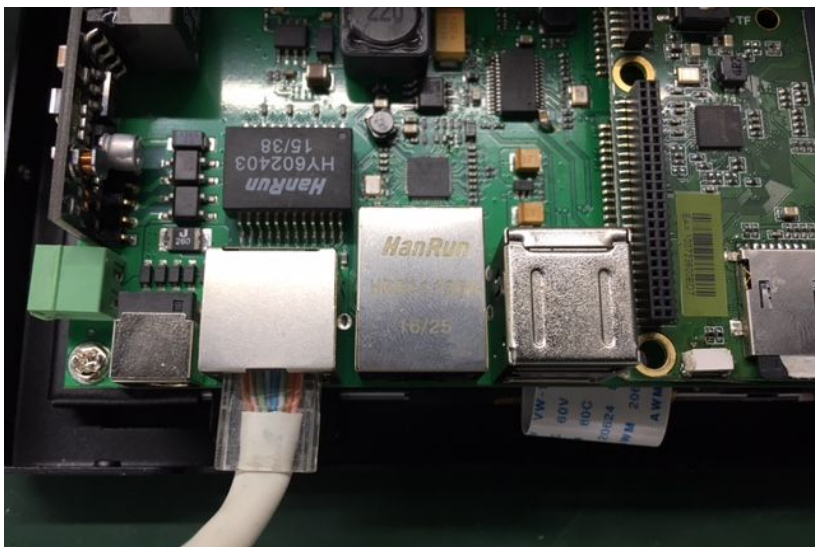


Figure 3: Connect to network

#### 3.2. Power On

Connect the 12V power adapter into a power supply and plug to the power outlet.



Figure 4: Connect to power

#### 3.3. Login

Enter the root privilege to login.

```
Please wait: booting...
Poky (Yocto Project Reference Distro) 2.1.1 hio-imx6dl-iob3200 /dev/tty1
hio-imx6dl-iob3200 login: root
root@hio-imx6dl-iob3200:~#
```